

ORDERING INFORMATION

Generic Part# - CPU - HDD - RAM - Branding
 ALPHA12852LP - XX - XX - XX - X

EXAMPLE

ALPHA12852LP - 10 - 2CF - 1GB - B

12 inch PPC with Celeron M 1GHz processor, 2GB Compact Flash, 1GB memory and Blue Chip Technology Branding

KEY

Celeron M 1GHz	10
40GB HDD	40HD
2GB Compact Flash	2CF
512MB RAM	512MB
1GB RAM	1GB
BCT Branding	B
No branding	N

ALPHA 12852LP

The Alpha range of Panel PCs are compact, highly integrated, network-ready devices with full I/O connectivity. They are used extensively across a variety of industries including transportation, field surveillance, building automation and industrial control.

The Alpha 12852LP model is a 12.1" fanless touch panel design available with a ULV Intel® Celeron® M 1GHz processor. The ULV kernel offers an economical combination of processing power and low heat generation in a fanless design, reducing fan related system failure and extending the overall operational lifetime.

Shock and vibration resistance, thermal stability and EMC compliance come as standard, a special design supports anti-vibration up to 1.3G (5~500Hz) in operation mode. The ruggedized aluminium front panel is IP 65/NEMA 4 compliant, guaranteeing protection where dust and drizzle is encountered. Supported OS include Windows XP/CE and WinXPe.

KEY FEATURES

- ▶ IP65, NEMA 4 rugged protection, aluminum front bezel
- ▶ 12.1" SVGA (800 x 600) color TFT LCD
- ▶ Fanless cooling system and ULV Intel® Celeron® M 1GHz processor
- ▶ Anti-vibration up to 1.3G (HDD, random)
- ▶ Supports WLAN antenna
- ▶ Over-current power protection-Fuse
- ▶ Panel, Desktop, VESA & Wall mounting options VESA, Wall (optional)

ALPHA 12852LP TECHNICAL SPECIFICATION

DISPLAY

- ▶ IP65, NEMA 4 rugged protection, aluminum front bezel
- ▶ 12.1" SVGA TFT LCD
- ▶ Brightness 450 nits
- ▶ Resolution 800 x 600
- ▶ Viewing Angle (H)130° (V)120°
- ▶ Resistive type touchscreen

SYSTEM

- ▶ ULV Intel® Celeron® M 1GHz processor
- ▶ Chipset Intel® 852GM+ICH4
- ▶ Award 4Mbit BIOS with RPL/PEX LAN boot ROM, Smartview and customer CMOS backup
- ▶ System memory - 1x 200pin DDR SODIMM up to 1GB
- ▶ Watchdog Timer - reset supported; 255 levels

STORAGE

- ▶ CompactFlash™ or IDE interface
- ▶ 2.5" HDD

LOCAL AREA NETWORK

- ▶ 2 x Ethernet 10/100Base-T
- ▶ Optional Wireless LAN

ENHANCED IO

- ▶ 1 x PS/2 for keyboard and mouse
- ▶ 2 x USB port; USB2.0 compliant
- ▶ 2 x D-sub 9-pin for RS-232
- ▶ 1 x D-sub 9-pin for RS-232/422/485
- ▶ 1 x D-sub 15-pin(female) for VGA output
- ▶ 1 x audio (Line-out)
- ▶ 1 x MiniPCI

ENVIRONMENTALS

- ▶ Operation temperature: 0°C~50°C (32°F~122°F)
- ▶ Relative humidity:10%~95% @40°C; non-condensing
- ▶ Operation vibration: 1.3G, 5~500Hz, random for 2.5" HDD
2.0G, 5~500Hz, random for CompactFlash™

APPROVALS

- ▶ EMC Emissions EN55022 (A)
- ▶ EMC Immunity EN55024
- ▶ Safety EN60950 - 1
- ▶ CE Marked

POWER

- ▶ 16~28VDC fuse power protection

OPERATING SYSTEM

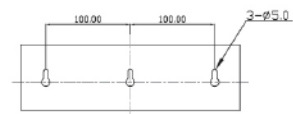
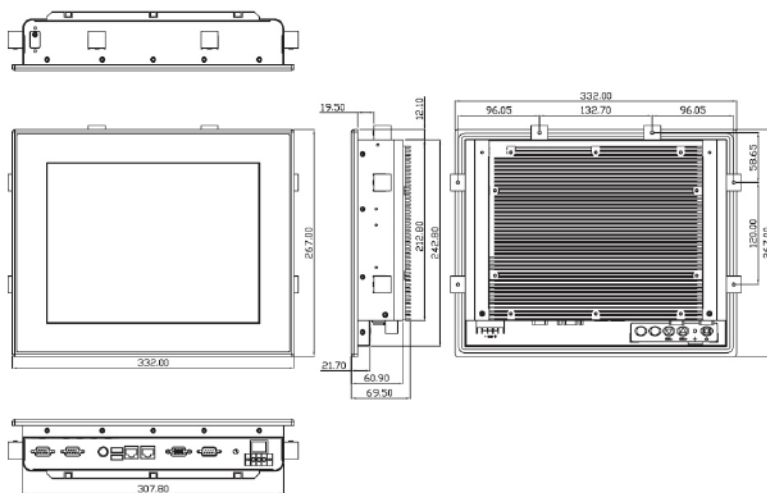
- ▶ Windows®XP Pro
- ▶ Windows®XP Embedded
- ▶ Windows® CE.NET

DIMENSIONS

- ▶ 332 (W) x 69.5 (D) x 267 (H) mm
- ▶ Weight 5.4kg (12 lb)

OPTIONAL ACCESSORIES

- ▶ Rack mount, VESA & wall mount bracket kit
- ▶ WLAN kit
- ▶ Desktop stand kit



Wall Mounting Hole Dim.

