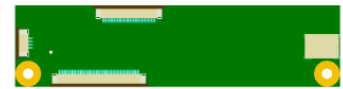
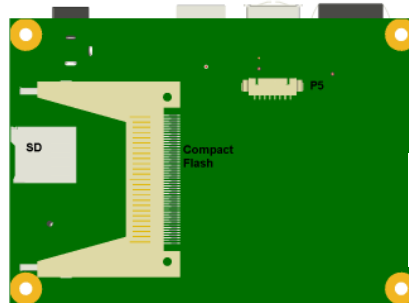
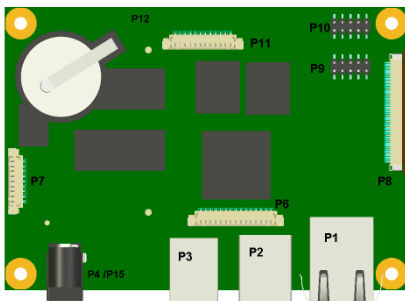


PACKING LIST

Note: The accessory cables are optional at time of purchase so may not be included in your order.

The RE1 single board computer has a number of kit options with different size LCDs, each LCD option has it's own Mounting Plate and Personality Module.:

UMSH8065	3.5 inches 320 x 240 resolution	UMSH8253	4.3 inches 480 x 272 resolution
UMSH8044	5.7 inches 320 x 240 resolution	UMSH8376	5.7 inches 640 x 480 resolution
UMSH8173	7 inch 800 x 480 resolution		



Personality Module



M3x4 POZI
M3x6 SEM
D3x6 POZI

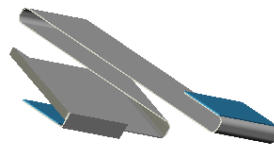


M3
Flange
Nut

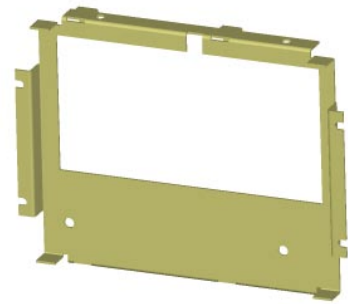
RE 1 SBC - top and bottom views with mating connections



LCD



Flat Flexible Cable (FFC) (P8)



Metal Mounting Plate



Utility
Connector (P7)



Serial (COM1+2)
(P11)



Serial (COM3)
(P10)



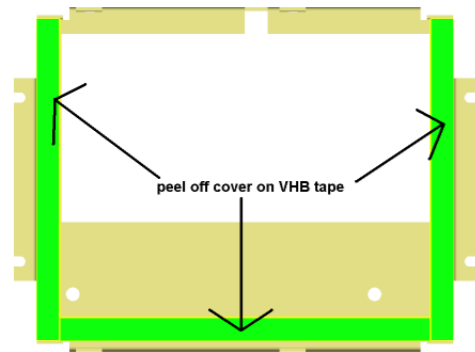
Audio Cable (P5)



GPIO/I2S Cable (P6)



USB x 2 Cable (P9)

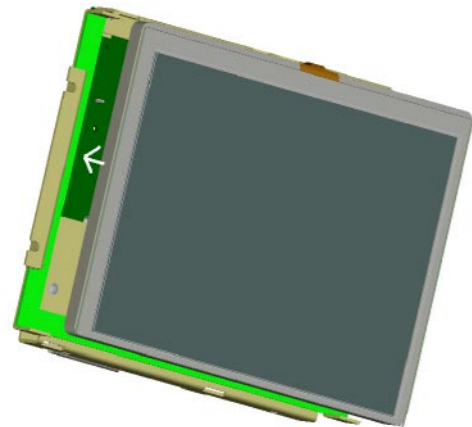


STEP 1 FITTING THE LCD TO THE METAL MOUNTING PLATE

The first step is to fit the LCD to the Metalwork. The UMSH8253 (4.3inch), UMSH8065 (3.5 inch), UMSH8173 (7 inch) and UMSH8376 (5.7 inch 640 x 480 res) LCD's require to be bonded to the metalwork using the VHB adhesive tape which is already applied to the metal work. *Before fitting, check that the Electronics all work together, as once fitted it will not be easy to separate the parts*

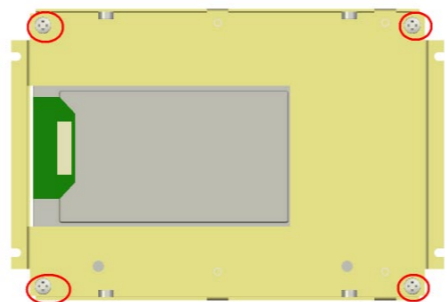
Peel back the VHB cover paper and carefully align the LCD with the metalwork before pressing together, ensuring that any cables on the LCD are placed through the relevant cut out in the metalwork.

Before starting it may also be useful to roughly assemble the components so that you are familiar with how SBC's are aligned and how best to fold the FFC cable(s)



NOTE: THE UMSH8044 LCD (5.7 inch 320 x 240 res)

The UMSH8044 LCD is attached to the metalwork with 4 D3x6 POZI screws supplied, as shown



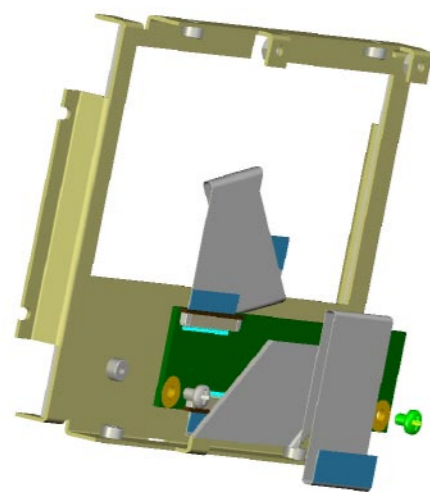
STEP 2 FITTING THE PERSONALITY MODULE TO THE METAL MOUNTING PLATE

After this, attach the Personality module to the back of the metal work as shown

Note to ease fitting, the 50 way FFC cables (connects the Personality Module to the RE1) should be folded and attached to the Personality module before assembly.

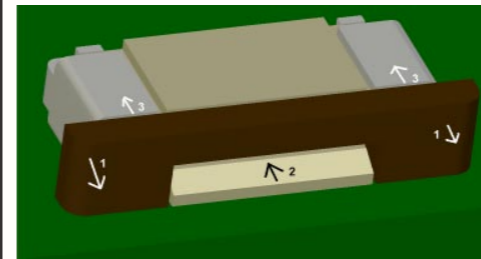
The UMSH8065 3.5 inch and UMSH8253 4.3" LCD's have a pre fitted FFC which connects to the Personality Module. The UMSH8044 5.7" low res (33way), UMSH8376 5.7" high res (40 way) and UMSH8173 7" (40 way) require an additional FFC in order to connect the LCD to the Personality Module

Use the 2 x M3x4 POZI screws supplied



NOTE: THE FCC connectors

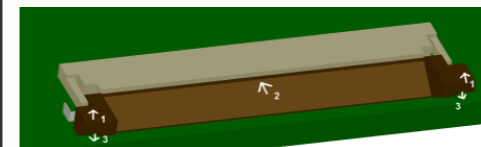
The FFC connectors are small and fragile so great care should be taken when fitting cables. The FFC cables are attached as follows



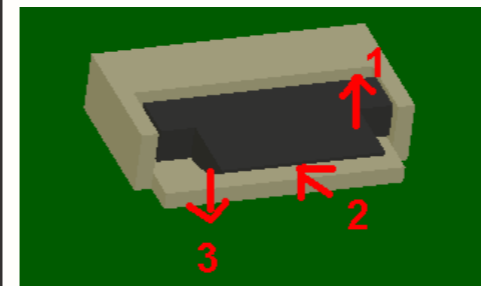
Step 1: carefully ease the brown section forward away from the connector body.

Step 2: insert the FFC cable (exposed connectors side down) as shown

Step 3: push the brown section back to lock the cable in position



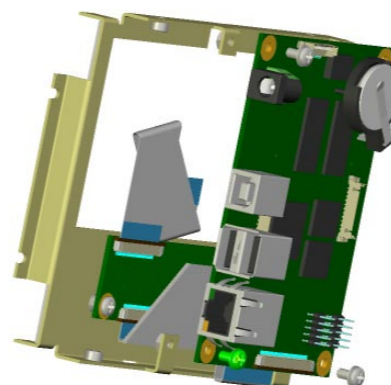
This connector is used with the UMSH8253 LCD. Carefully lift the brown tab, and feed the FFC into the connector above this tab – the exposed connections should be upwards. carefully lower the tab again to lock the cable in place.



This small connector is also used with the UMSH8253 LCD.

Carefully lift the tab and insert the FFC cable below the tab (exposed connectors side down).

Lower the tab again to lock home



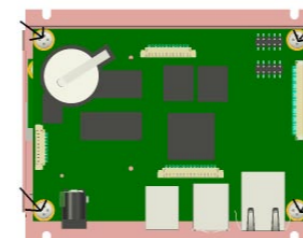
UMSH8376 5.7 high res display

STEP 3 FITTING THE SD card and Audio Cable

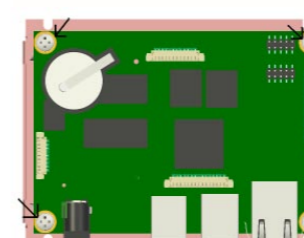
Next, fit the SD card and audio cable, if supplied, and attach the RE1 board to the metal work using the M3 Nut and M3x6 SEM screws to secure in place. All other cables can be attached once the unit has been assembled

Note: Depending on the way the FFC cable has been folded and the orientation of the RE1 board on the rear of the metal work, it may be better to attach the 50 way FFC cable to the RE1 before attaching the board it to the metal work

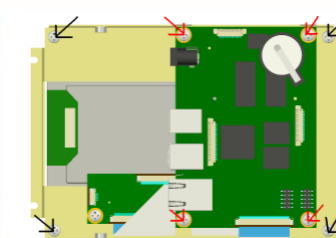
The picture on the left shows the UMSH8376 5.7 assembly. The other assembly variants are shown below. Lastly fit the accessory cables as required



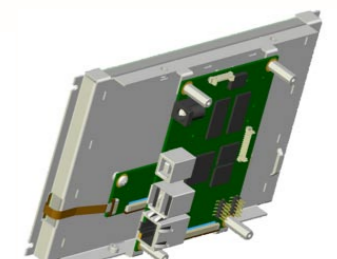
UMSH8253 4.3 inch



UMSH8065 3.5 inch



UMSH8044 5.7 low res



UMSH8173 7 inch

YOU ARE NOW READY TO START USING THE RE1

Once assembled, apply power and the RE1 is ready to go.

If required, the RE1 User Guide provides details on setting up and configuring the RE1. A point to note is that for programming using the Configuration Utility, a standard USB "A to B" cable will be required. This type of cable is available from any PC accessory store

OTHER SUPPORTING TECHNICAL DOCUMENTATION

RE1 Single Board Computer Cable Drawings
RE1 Single Board Computer CE 6.0 Programmers Guide
RE1 Single Board Computer Datasheet
RE1 SBC Display Kit Datasheet
RE1 Single Board Computer User Guide