



**Using Intel's
Graphics Media Accelerator Driver**

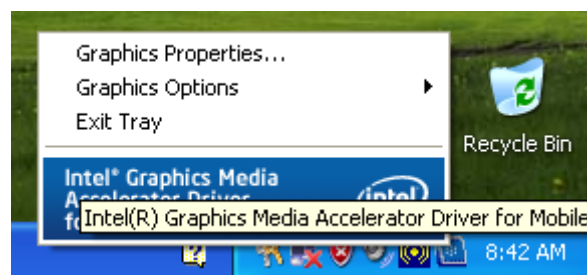
Background

Blue Chip Technology offers a range of products, some of which include Intel's Graphical Chipsets either embedded into the motherboard or as additionally fitted PCI/PCI-Express Graphics Adapters.

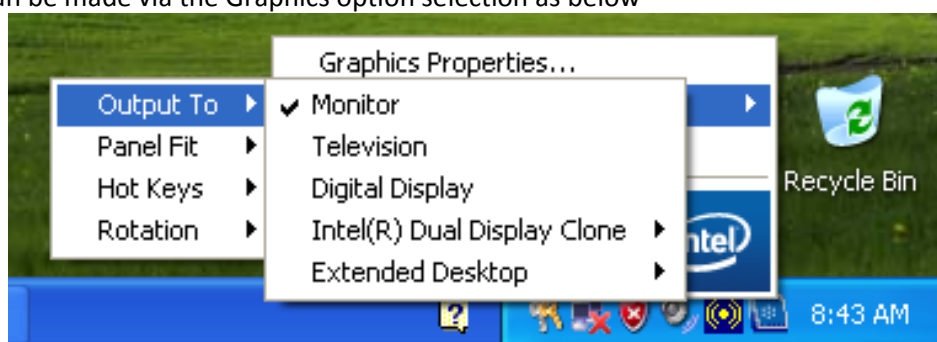
Intel's Graphics Chipsets are controlled by a software interface called the Intel Graphics Media Accelerator Driver. The following document is intended to give some basic help in using this utility, and in particular working with multiple displays

The Media Accelerator

The Media Accelerator software can be launched from the Windows Desktop via the ICON in the Task Bar which resembles a Display. Just hover over the ICON with the mouse and select Graphics Properties using the Right Hand Mouse button

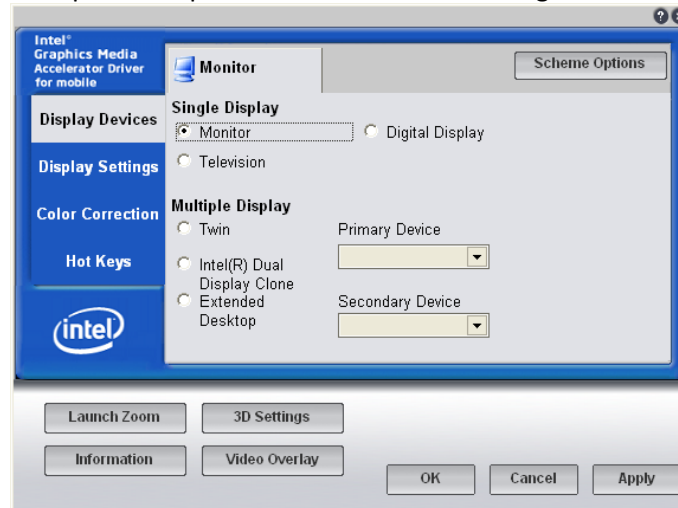


For simple changes to screen resolution there is no need to launch the full application, as simple changes can be made via the Graphics option selection as below

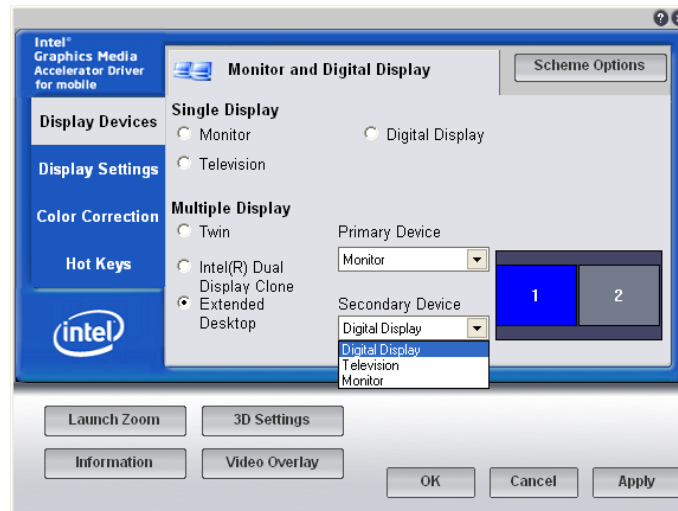


The above example shows the menu option with Analogue, digital and a TV all attached. Simple select the new output device. Note, that if only one Display is detected as being attached, then the "Output To" option will not appear

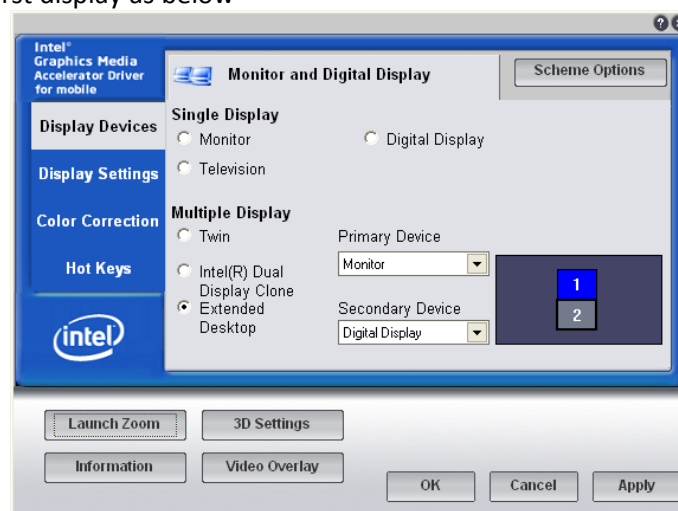
Selecting the "Graphics Properties" option will launch the following window



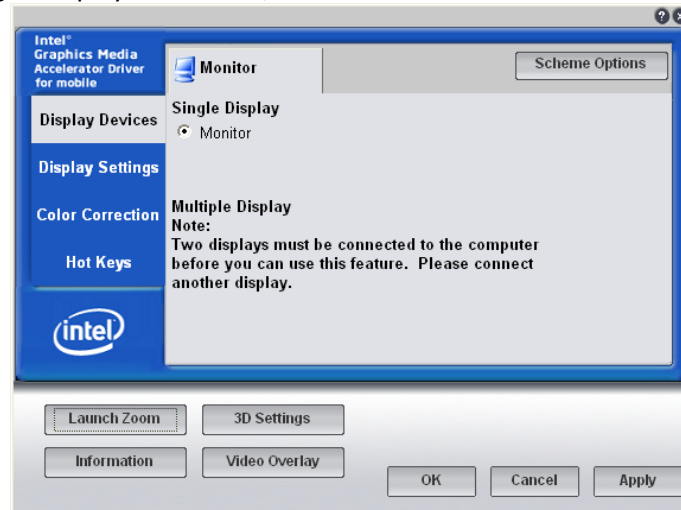
From this menu, the display output can be changed to one of the other attached devices, or Multiple Display mode can be set.



If the extended desktop is required top to bottom, rather than side to side, drag the second display above or below the first display as below



If only a single Analogue display is attached, then the window will look like the following



Note that if more than one Display is attached, and only one display is shown then the system has not detected the other display correctly.

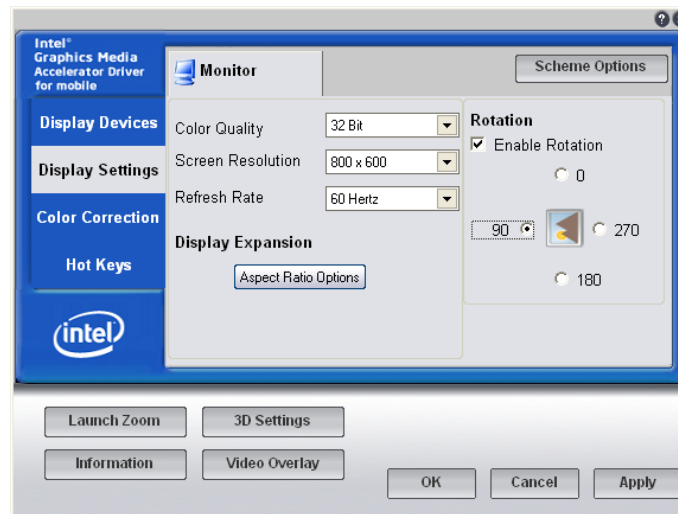
For Analogue Displays, this could mean that the DDC information within the Display is incorrect or that the DE15M cable is either damaged or does not provide the DDC data required. The DE15M cable should have either 14 or 15 pins

For Digital displays, this could be due to incorrect DDC data or that an Analogue Display is being used via a HDMI/VGA or DVI/VGA dongle. For DVI output, it could also be due to incorrect DVI operation. There are two main versions of DVI, DVI-D (Digital) and DVI-A (Analogue). Check that the appropriate cable is being used: i.e. a DVI-D connector should look like the following



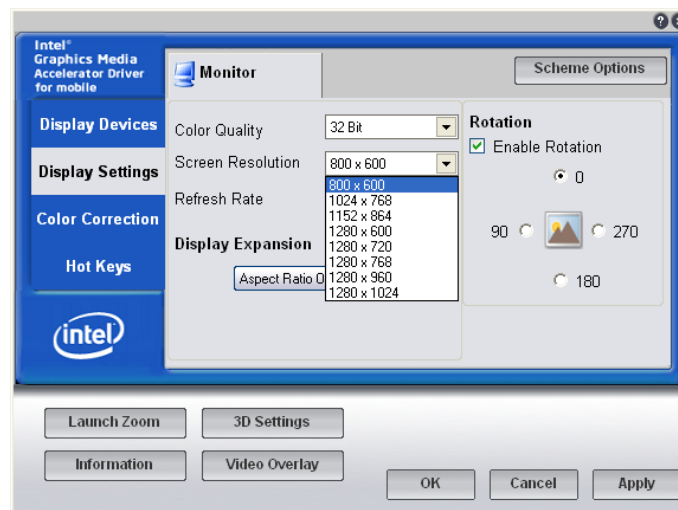
Changing the Display Resolution

The Display Settings page provides the options available for each display



Simply select the new output required then press APPLY. The settings will appear for 15 seconds, and there will be a prompt to confirm if these settings. If confirmation is not completed in this time, then the display will revert back to its previous settings.

This is particularly useful in instances where the display is not correctly identified and resolutions options are available for selection which the display cannot handle.



If the display is correctly identified, then the drop down Resolution box will contain only the resolutions supported by the particular display.