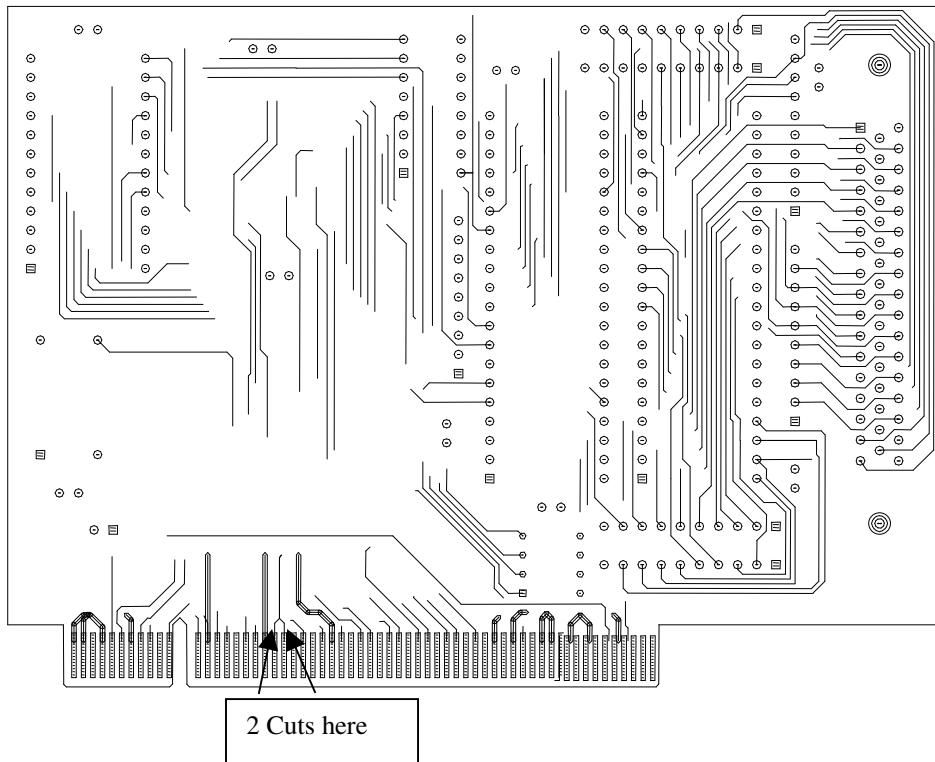


Rework Instructions for BCT PCI-PIO and PCI-DIO

Cut tracks to Gold Fingers A40 and A41. The 'A' side is the solder side on PCI cards. A1 starts at the connector side of the board going to the outside world (D-type)

The tracks can be recognized by the following – they are adjacent to the second long fat GND trace from the slot towards the metalwork end of the board and they are connected together by a forked trace right by the gold fingers. They must be isolated from each other and the via which connects them to the 5V plane – 2 cuts required.



2022 REVISION (LAYER 4)